

Process Connector

spGate 2020.1

Upgrade News



2020.1 Upgrade Details

[Import/Export]

1. Supported 3D CAD Format Version Enhancements P3

[Enhancements]

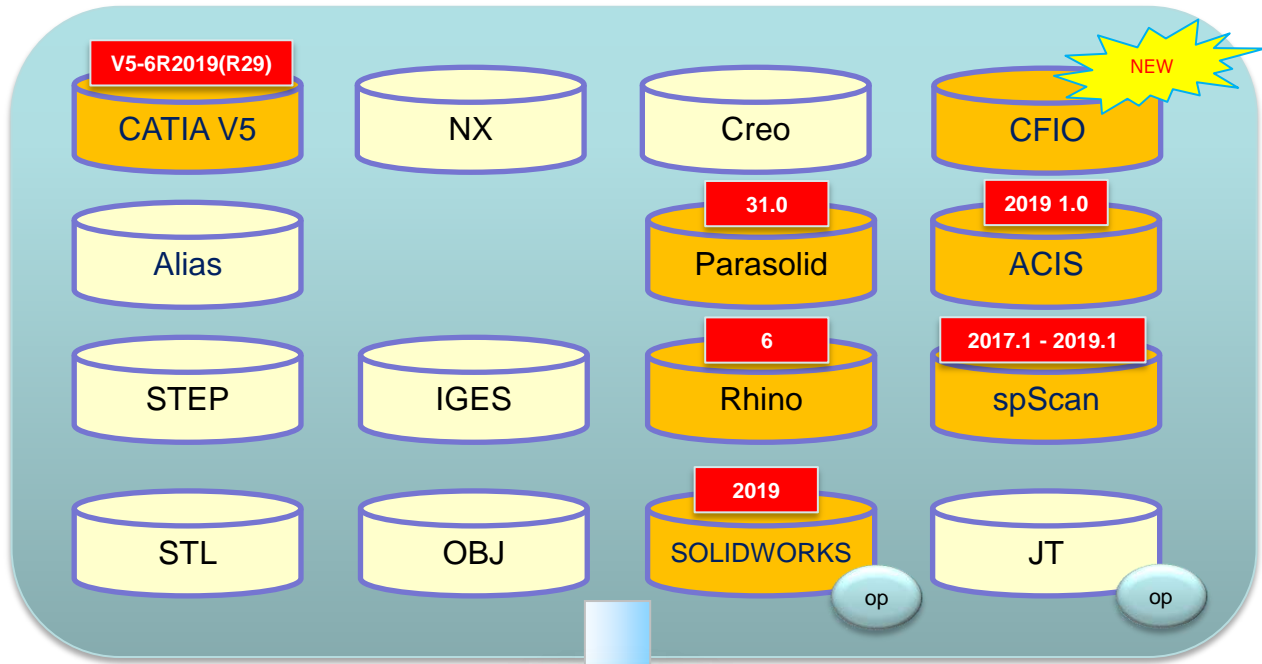
2. Check Interference [Batch Process] P4
3. Feature Recognition P5
4. Area of Vertical Faces Sticking to the Die P5
5. Current work coordinate as origin P6
6. Mirror P6
7. Change layer P7
8. Electrode taper extension / color change P7

[Specification change]

- [1] Check Undercut P8
- [2] Volume | Surface Area | Center of Gravity P8
- [3] Repair Non-Tangent Faces P8
- [4] Log file P8
- [5] Fitting control after import P8

[Import/Export] 1. Supported 3D CAD Format Version Enhancements

Import

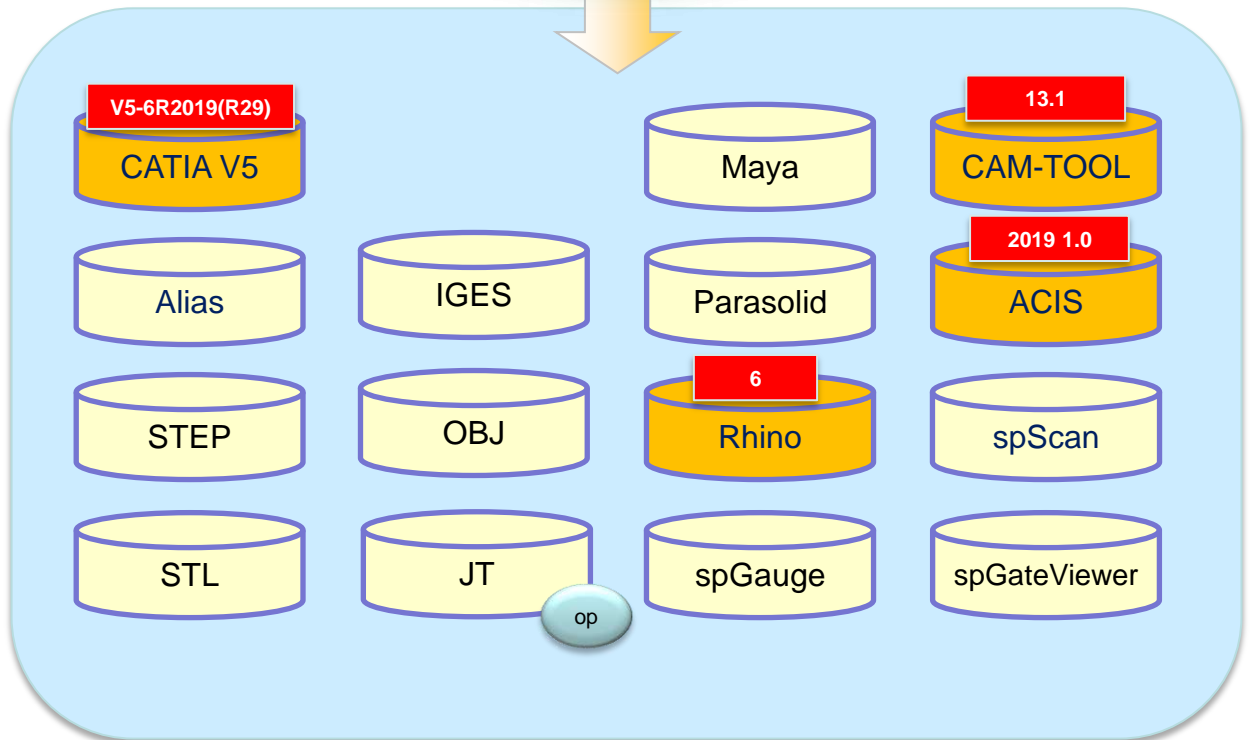


3D CAD op
 SolidWorks Reader and JT Reader/Writer require optional licenses.



Ver. No. Enhanced
 Latest version supported in this upgrade.

Export



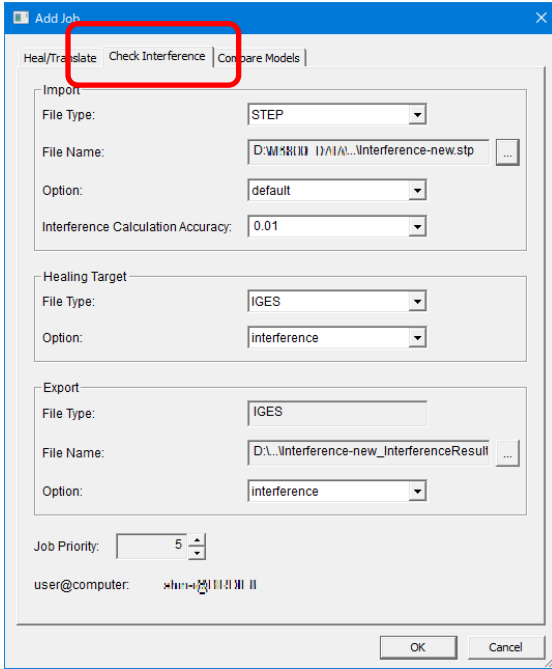
[Enhancement] 2. Check Interference [Batch Process]

[spGate-Job-Manager]



The [Check Interference] tab has been added to Add Job dialog of spGate-Job-Manager.

The interfering locations can be exported as IGES and you can import it to your CAD to review the interfering locations.



High precision interference check takes time. spGate-Job-Manager allows the process to be done in a batch during the night time.

Visually check by importing interfering parts to CAD



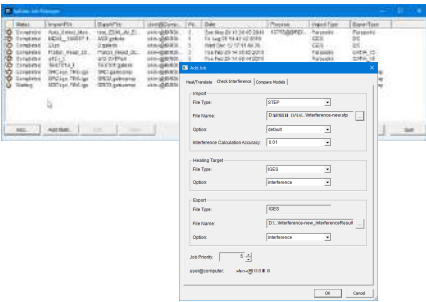
CATIA



NX

Export interfering parts as IGES

spGate-Job-Manager

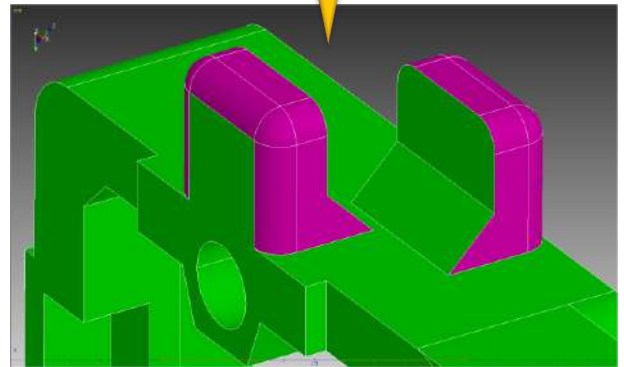
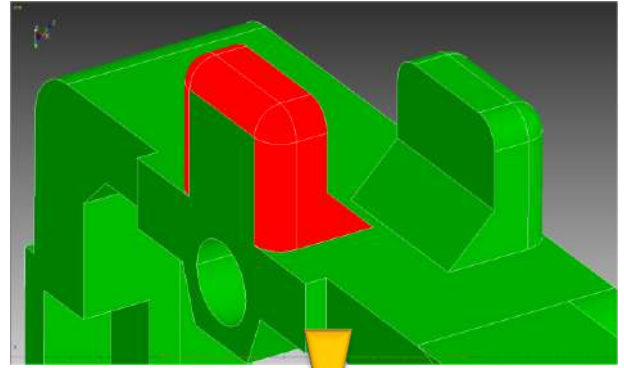
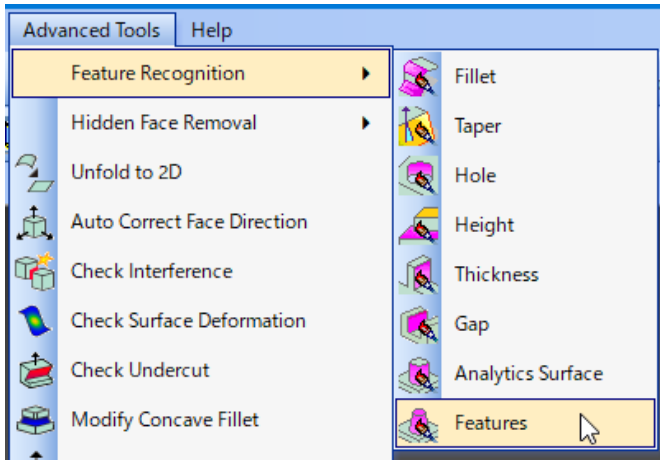


[Enhancement] 3. Feature Recognition

[Menu: Advanced Tools/Feature Recognition/Features]

Change the color of faces that are of similar shapes for the entire CAD model, automatically.

Detects the parts that are of the same topology, irrespective of the size of faces, automatically.

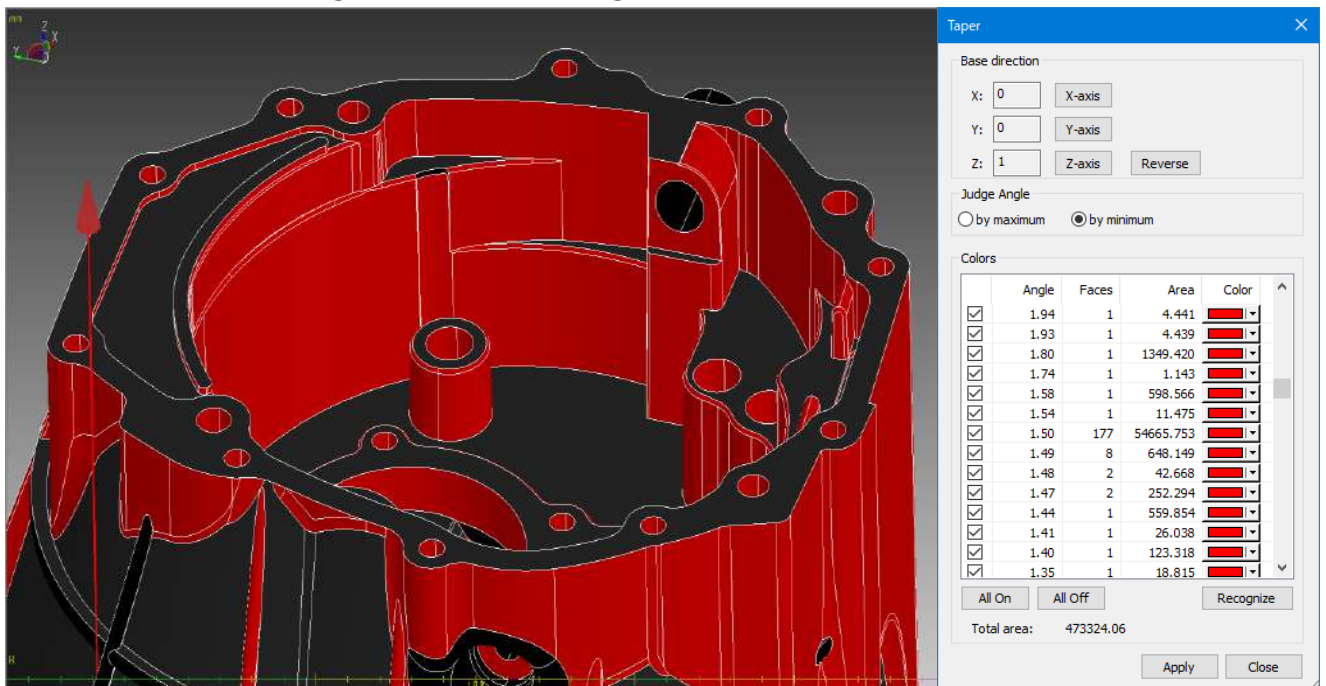


[Enhancement] 4. Area of Vertical Faces Sticking to the Die

[Menu: Advanced Tools/Feature Recognition/Taper]

You can compute the total area of the surfaces that are near vertical, by using the feature recognition for tapers.

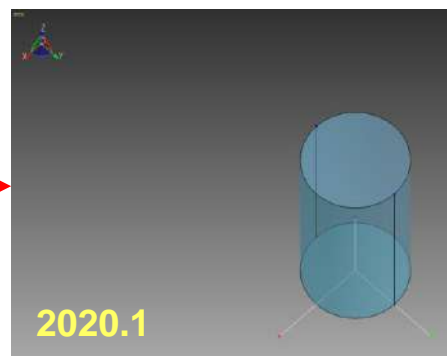
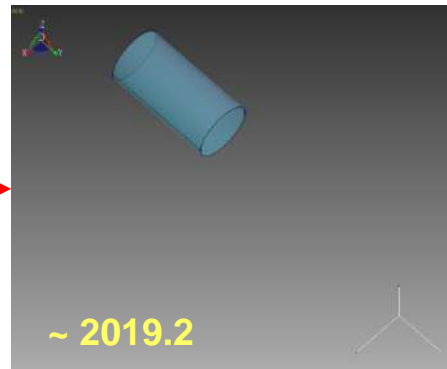
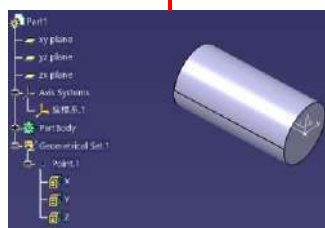
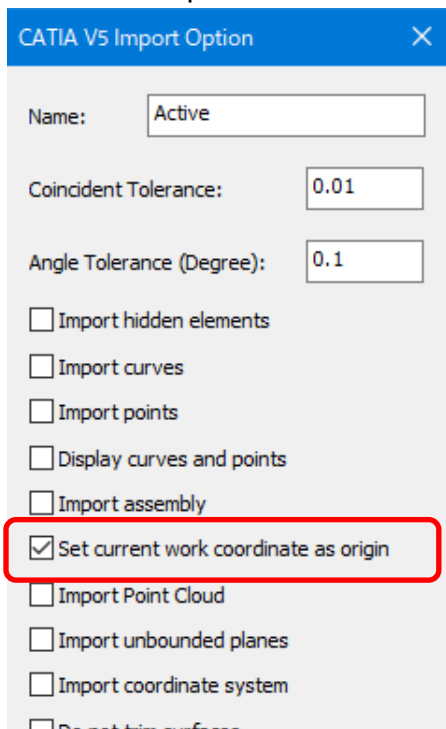
Use this for checking the faces sticking to the die cast.



[Enhancement] 5. Current work coordinate as origin

[Menu: File/Import]

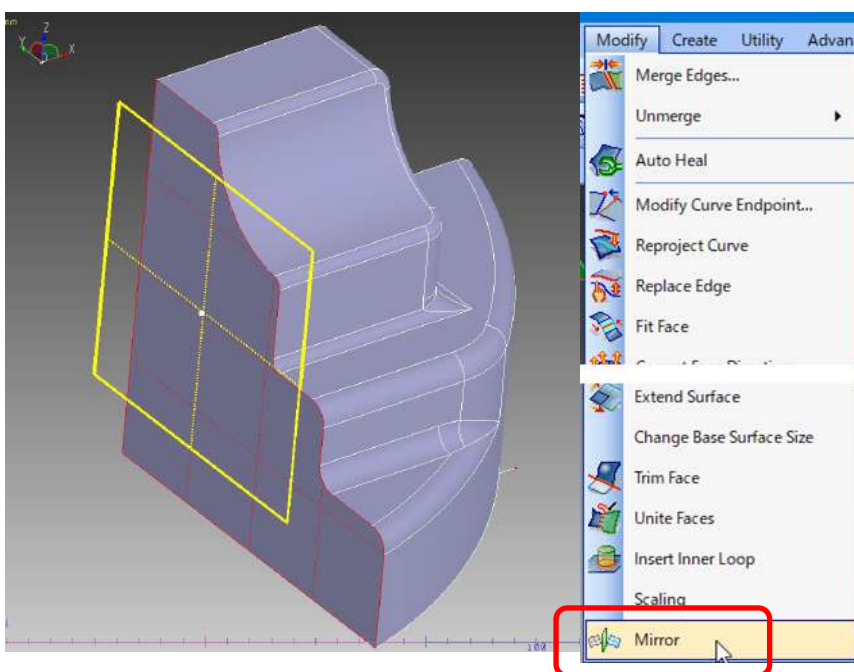
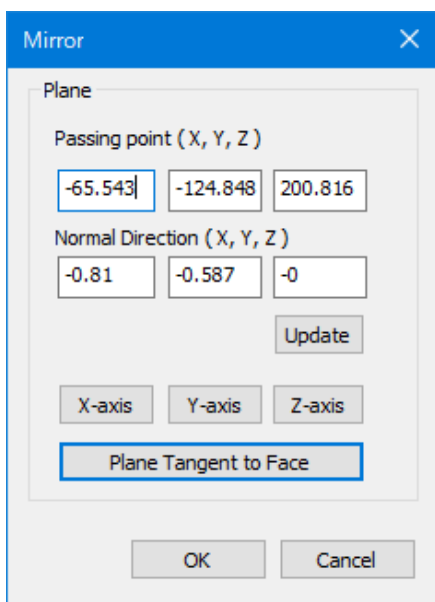
Now you can import CATPart's active coordinate origin as the origin of the model in spGate.



[Enhancement] 6. Mirror

[Menu: Modify/Mirror]

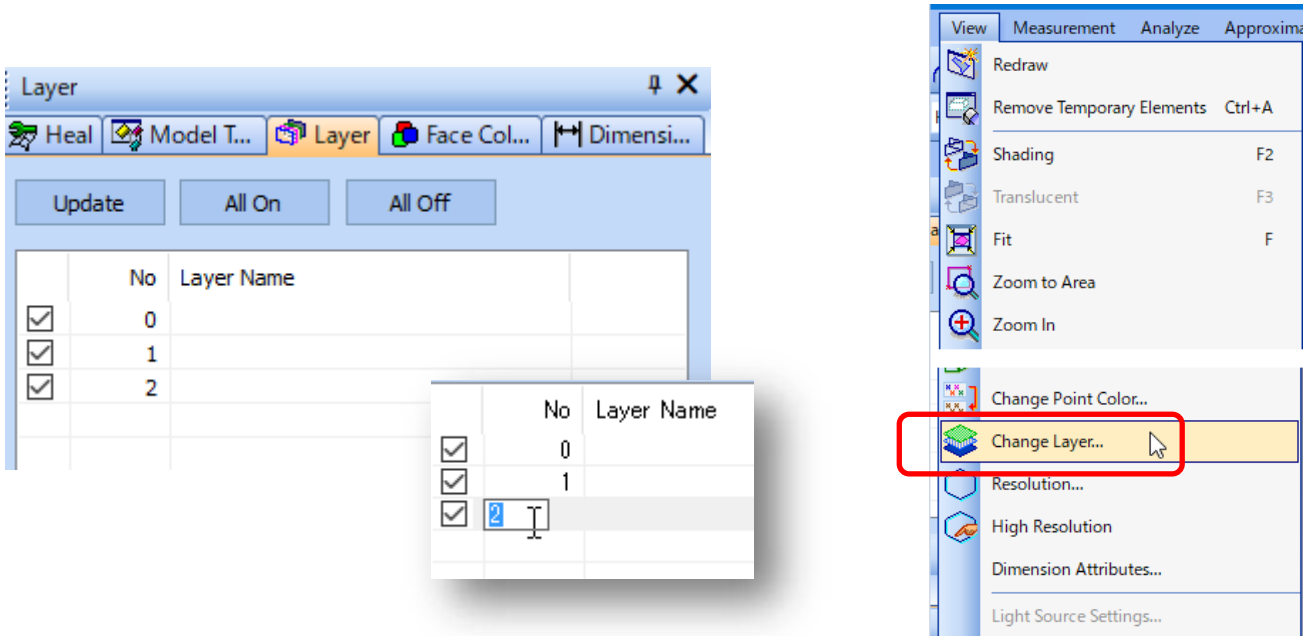
[Mirror] feature has been added to [Modify] menu. This is useful when comparing bilateral symmetry.



[Enhancement] 7. Change Layer

[Menu: View/Change Layer]

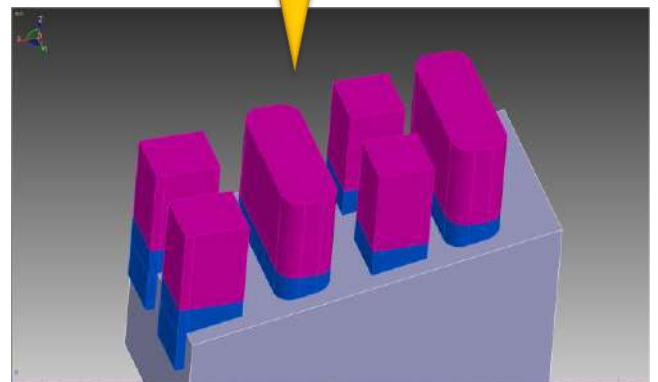
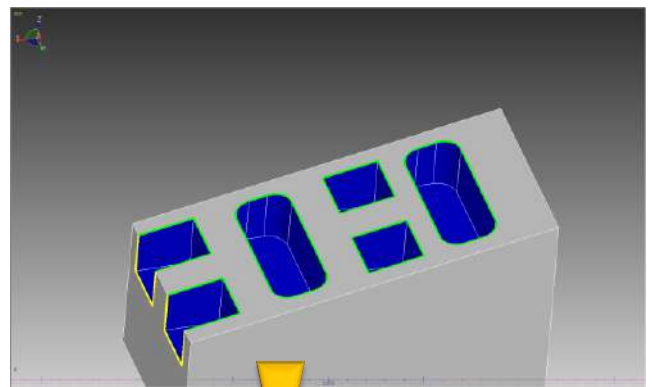
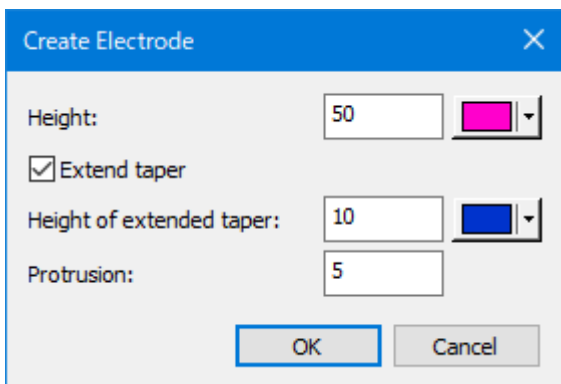
Now you can change the layer of a specific face.
By changing the layer number in the Layer pane, multiple layers can even be integrated.



[Enhancement] 8. Electrode taper extension / color change

[Menu: Advanced Tools/Feature Recognition/Features]

The taper of electrode parts can now be extended and the color can be modified as well.
The amount of protrusion from open pockets can also be specified.



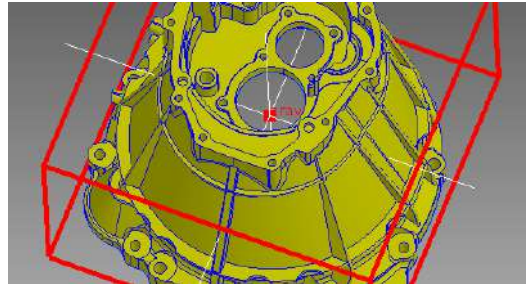
■ Check Undercut

Enhanced the menu, so that the base axis direction can be indicated by either "a straight line" or "the normal direction of a face."



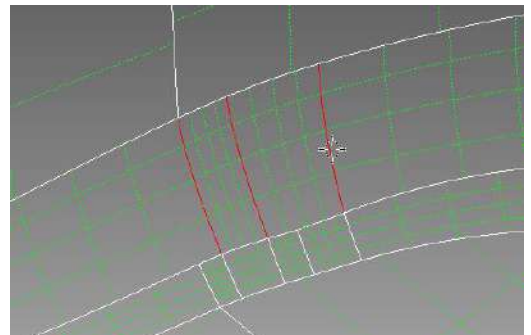
■ Volume | Surface Area | Center of Gravity

Now the base axis (X, Y, and Z axes) is created at the location of the center of gravity.



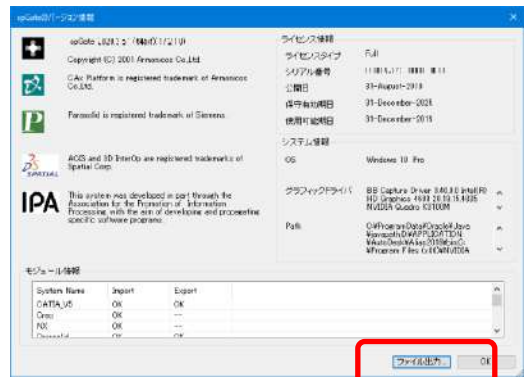
■ Repair Non-Tangent Faces

Now you can pick multiple edges in: [Modify]-[Repair]-[Non-Tangent Faces].



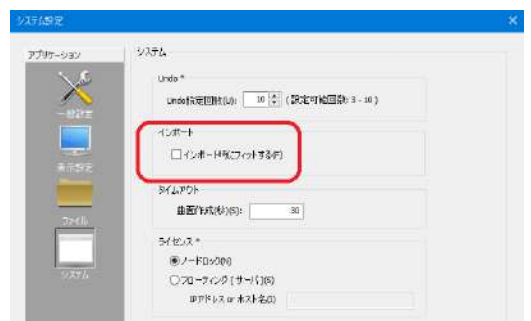
■ Log file

Integrated the log information exported from [Help]-[Version Information]-[Output File...] and "SystemInfo.exe."



■ Fitting control after import

Now you can choose to fit the model right after importing to the view or not.



Developer



Armonicos Co., Ltd.
Hamamatsu ACT Tower 21st floor, 111-2 Itaya-machi, Naka-ku,

Hamamatsu City, Shizuoka Prefecture 430-7721 Japan
TEL: (+81)53-459-1000 FAX: (+81)53-459-1155
<https://www.armonicos.co.jp/en/>